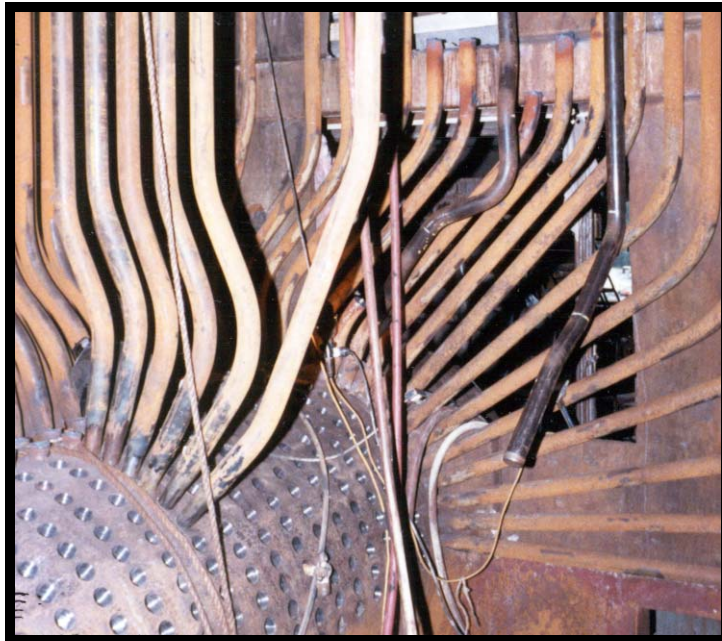


## PROJECT CAPABILITIES

### BOILER PRESSURE PART DESIGN



JANSEN is a fully qualified engineering firm specializing in the design and specification of boiler pressure parts. Projects include redesign of heat transfer components using improved technology. These boiler components have included new generating banks, superheaters, water wall furnaces, and economizers. JANSEN holds an ASME Boiler and Pressure Vessel Code Section I "S" stamp for the design of power and recovery boilers and the NBIC "R" stamp.

#### Scope of Service

- Performance testing
- Analysis of heating surface requirements
- Process design engineering
- Detail drawings and specifications for fabrication and construction
- Engineering, Procurement, and Construction (EPC) scope of supply.
- Startup services

**Selected References (see next page)**



## **Selected References**

Bowater Inc. - Catawba, NC  
Fletcher Challenge Canada Ltd. - Mackenzie, BC  
International Paper Company - Ticonderoga, NY  
International Paper Company - Vicksburg, MS  
Kimberly-Clark Forest Products, Inc. - Everett, WA  
Kimberly-Clark Forest Products, Inc. - Terrace Bay, ON  
Mead Paper - Escanaba, MI  
Montenay Inc. - Burnaby, BC  
Packaging Corporation of America - Valdosta, GA  
Simpson Tacoma Kraft - Tacoma, WA  
Skeena Cellulose Inc. - Prince Rupert, BC  
Smurfit Cartón de Colombia - Cali, Colombia  
Western Pulp Limited Partnership - Port Alice, BC  
Weyerhaeuser Paper Company - Campti, LA  
Weyerhaeuser Paper Company - New Bern, NC